

Utility
Media Converter
V2.0

User's Manual

Table of Contents

STEP 1. SELECT FUNCTION	4
CONVERT RAW FILE TO AVI FILE	4
CONVERT RAW FILE TO MULTIPLE JPG FILE	4
CONVERT TO RAW FILE	4
CONVERT MP4 FILE TO JPG FILE	4
STEP2. SELECT SOURCE	6
CONVERT SINGLE FILE.....	6
CONVERT ALL FILES IN SELECTED FOLDER	7
STEP3 CHOOSE DESTINATION FOLDER.....	8
STEP 4. SELECT A PERIOD OF TIME	9
STEP 5. SELECT PROCESS	10
Select Add OSD	10
Use Channel ID	10
Add User-Defined Text.....	10
Add Date Time.....	10
STEP 6. START CONVERT	13
Start convert when source and process are set.....	13

Table of Figures

FIGURE 1 FORMAT CONVERT	5
FIGURE 2 BROWSE SINGLE RAW FILE	6
FIGURE 3 BROWSE SINGLE MP4 FILE.....	6
FIGURE 4 BROWSE A FOLDER TO CONVERT	7
FIGURE 5 DESTINATION FOLDER	8
FIGURE 6 SPECIFY BEGIN TIME AND END TIME.....	9
FIGURE 7 OVERLAY MECHANISM.....	11
FIGURE 8 THE RESULT OF OVERLAY	12
FIGURE 9 CONVERT RESULT	14

Step 1. Select Function

There are four formats you can use media converter to convert file.

Convert RAW file to AVI file

If you want to convert RAW file to AVI file, select first radio button.

Convert RAW file to Multiple JPG file

If you want to convert RAW file to multiple JPG file, select second radio button.

Convert to RAW file

If you want to convert to RAW file, select third radio button.

Convert MP4 file to JPG file

If you want to convert MP4 file to JPG file, select second radio button.

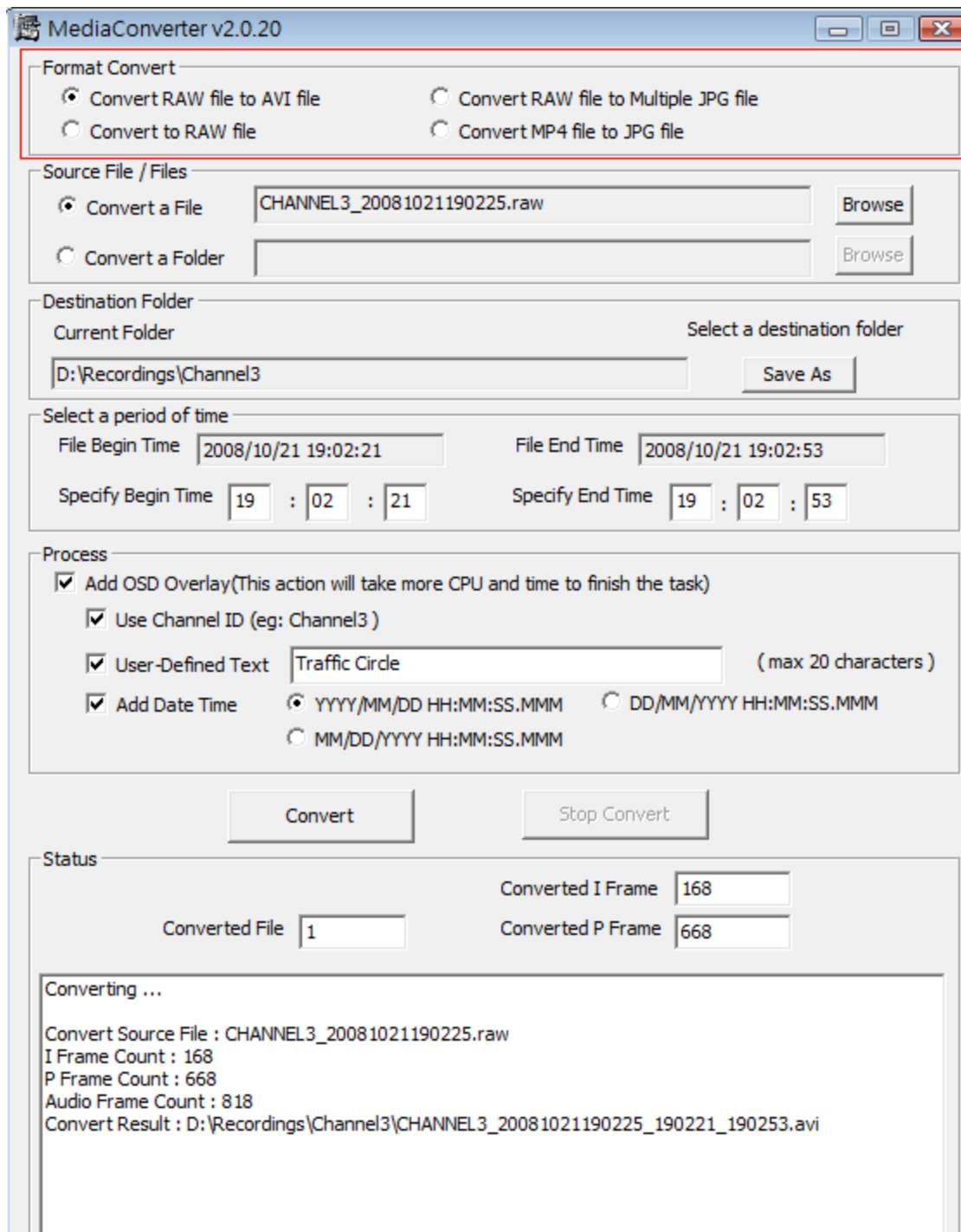


Figure 1 Format Convert

Step2. Select Source

Convert single file

Browse a single file and select it.

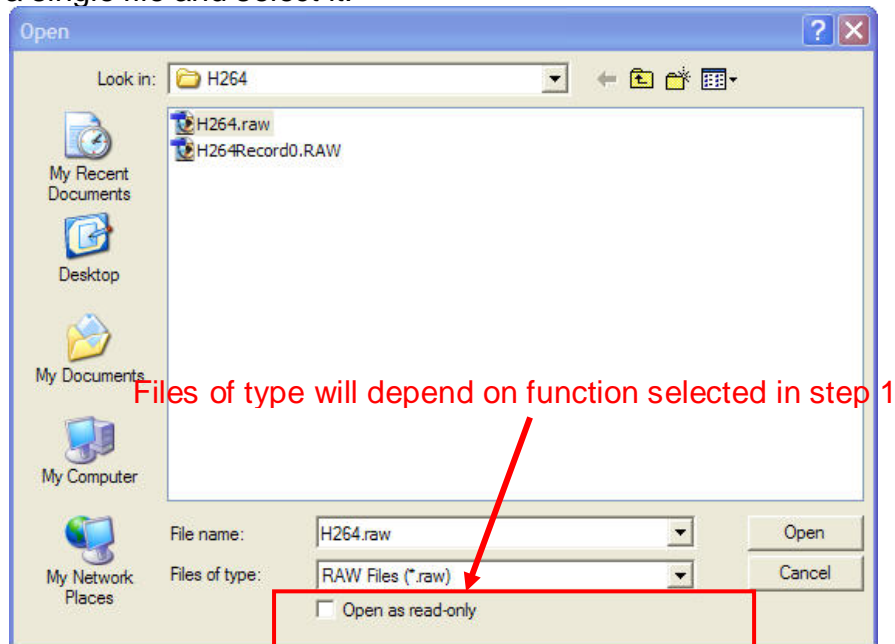


Figure 2 Browse single RAW file

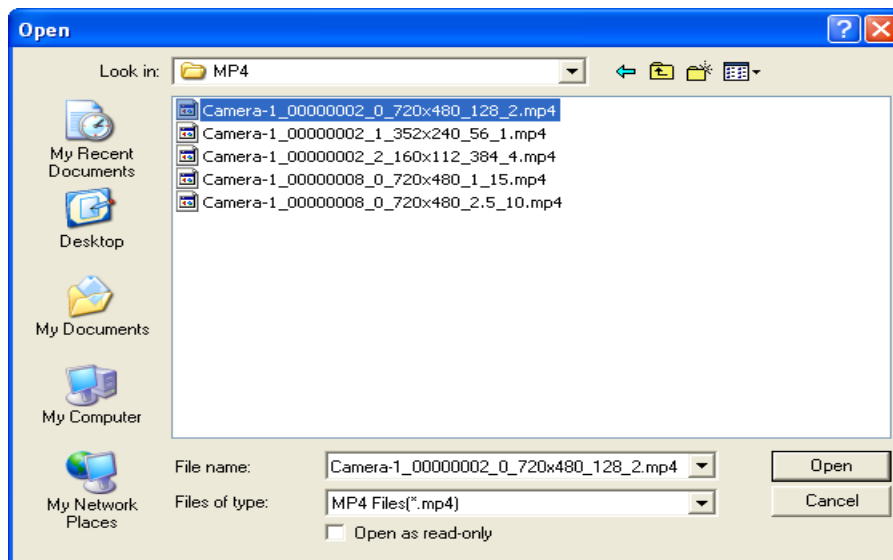


Figure 3 Browse single MP4 file

Convert all files in selected folder

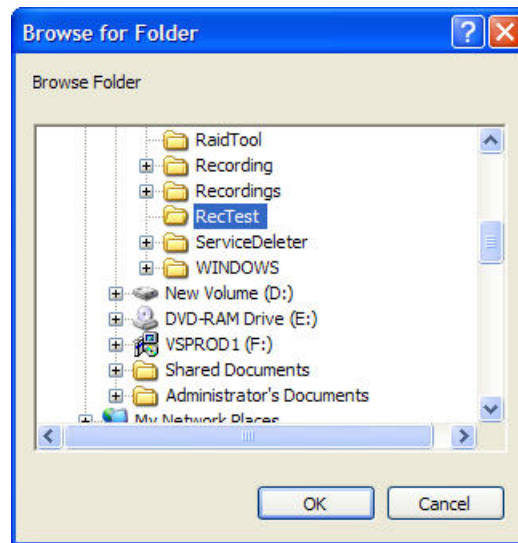


Figure 4 Browse a folder to convert

Step3 Choose Destination Folder

The default save folder will be same as the original file. If you need to save the file into another folder, please click “**Save as**” button to select a destination folder.

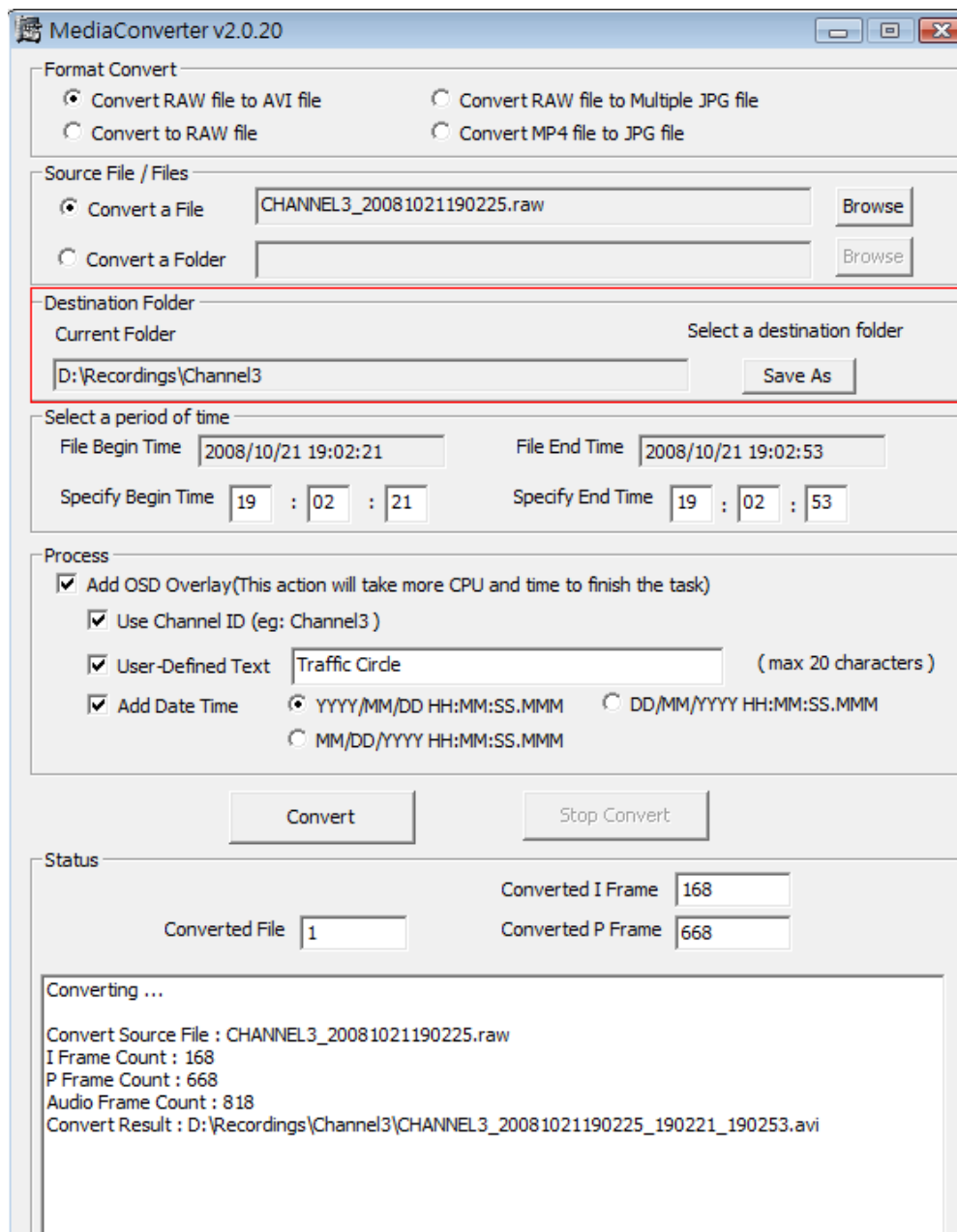


Figure 5 Destination Folder

Step 4. Select a period of time

After you browse a file, the system will automatically search the begin time and end time of the selected file.

Please manually set the specify begin time and end time as you need.

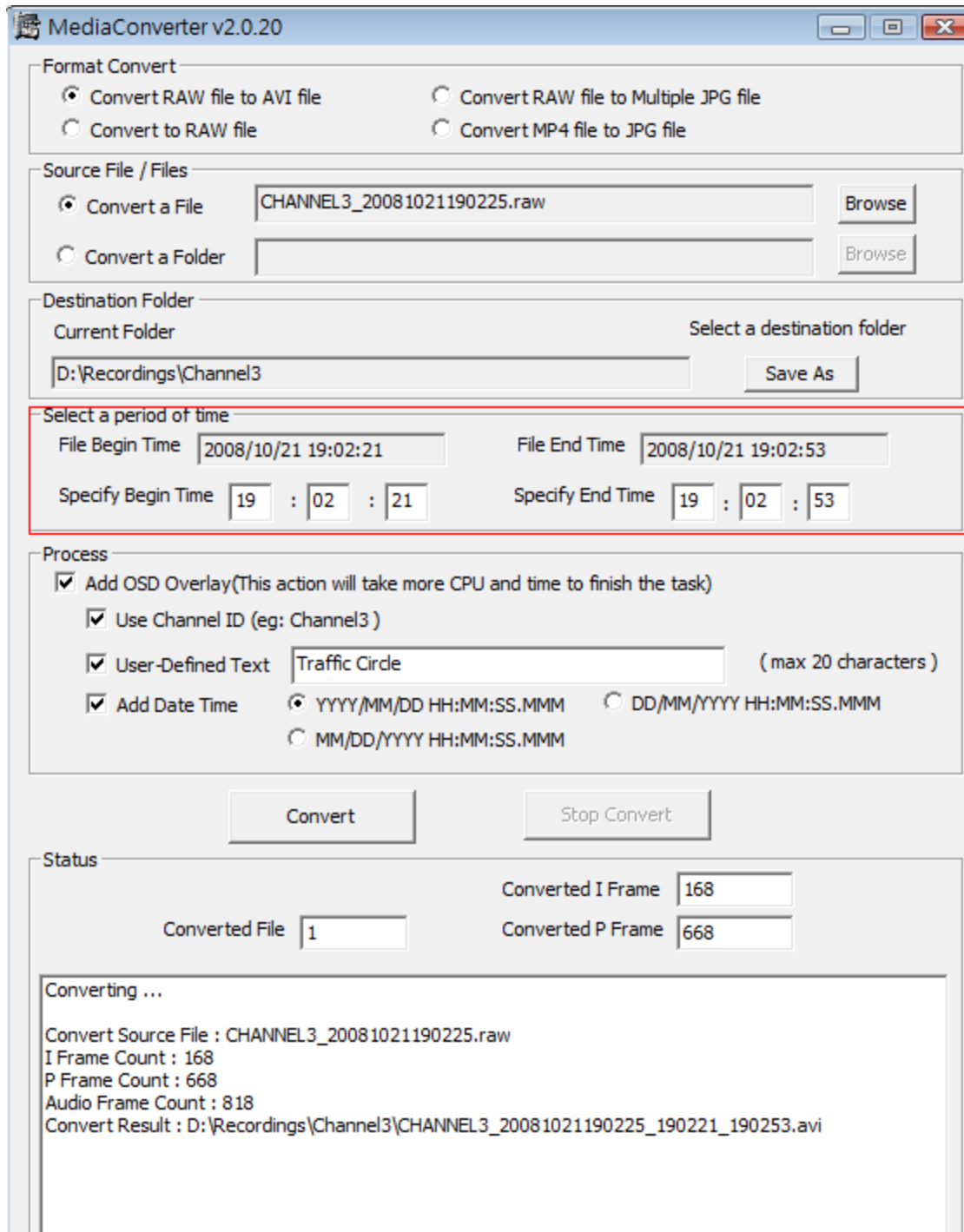


Figure 6 Specify Begin time and end time

Step 5. Select Process

The process mainly perform overlay mechanism, included channel ID, user-defined text and date time.

Select Add OSD

If you want to add OSD on video frames, select the check box “Add OSD Overlay”.

Notice: This action will take more CPU and time to finish the task.

Use Channel ID

If you need to know the covered file come from, you can add Channel ID on the overlay of playback file. Click the “Use Channel ID” box to add into.

Notice: we do not recommend to change your file name after you recorded from network recorder.

Add User-Defined Text

If need to add text, please select the “User-Defined Text” check box. And fill in the text you need in the space e.g. Traffic Accident

Notice: The maximum characters you can fill in the space is 20.

Add Date Time

Select the “Add Date Time” check box to add date time into the overlay of file. There are three time format you can choose.

1. Date Time format 1: YYYY/MM/DD HH:MM:SS:MMM (eg: 2008-12-20 13:20:47:123).
2. Date Time format 2: MM/DD/YYYY HH:MM:SS:MMM (eg: 12-20-2008 13:20:47:123).
3. Date Time format 3: DD/MM/YYYY HH:MM:SS:MMM (eg: 20-12-2008 13:20:47:123).

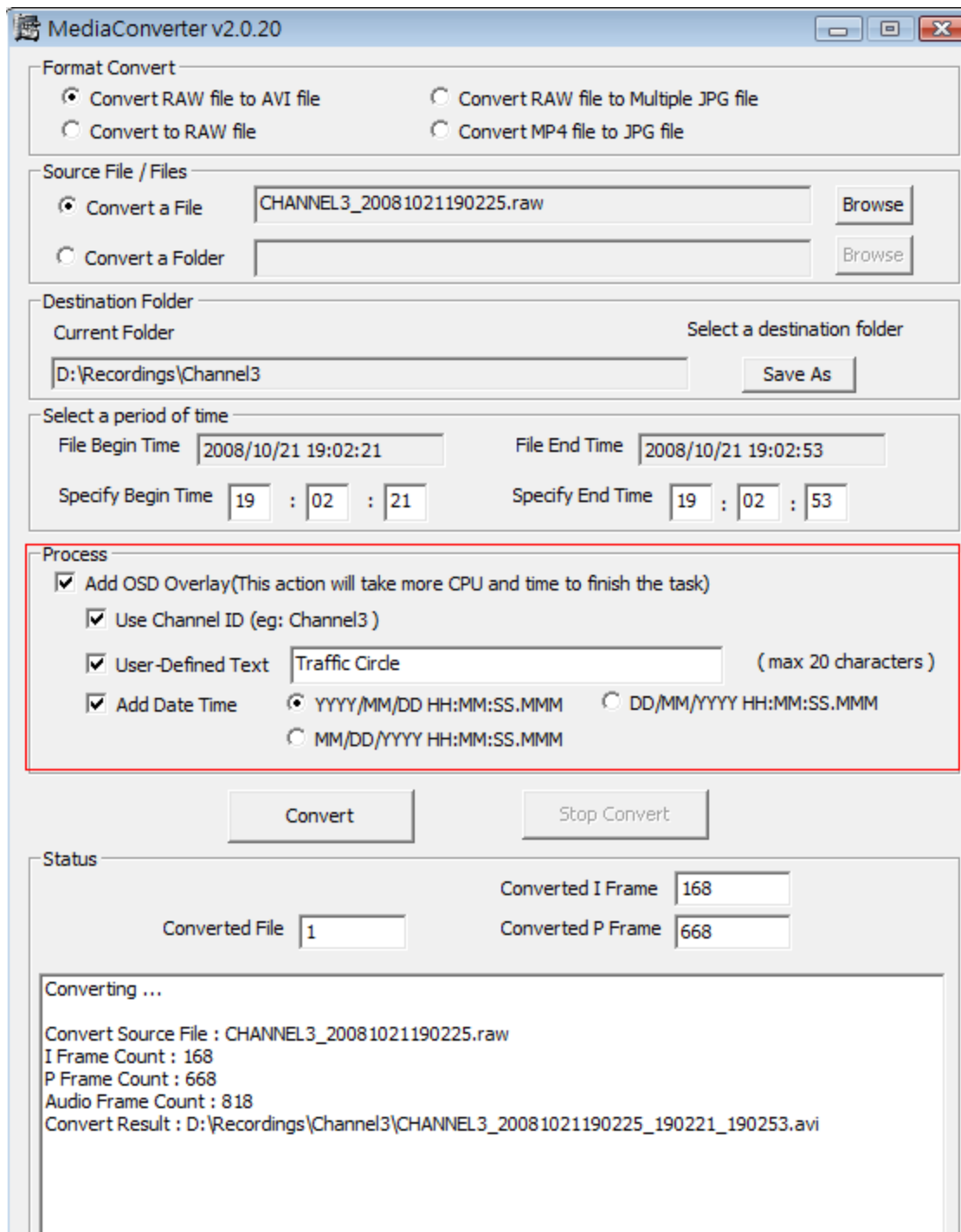


Figure 7 Overlay Mechanism



Figure 8 The Result of overlay

Step 6. Start Convert

Start convert when source and process are set

Click “Convert” button to start convert file process. If you need to interrupt convert process, please click the stop button.

The process will also show the result and some information about video.

1. Show how many files are converted.
2. Show how many I Frames converted when convert RAW file.
3. Show how many P Frames converted when convert RAW file.
4. Show how many Audio Frame converted when convert RAW file
5. Information about convert result.

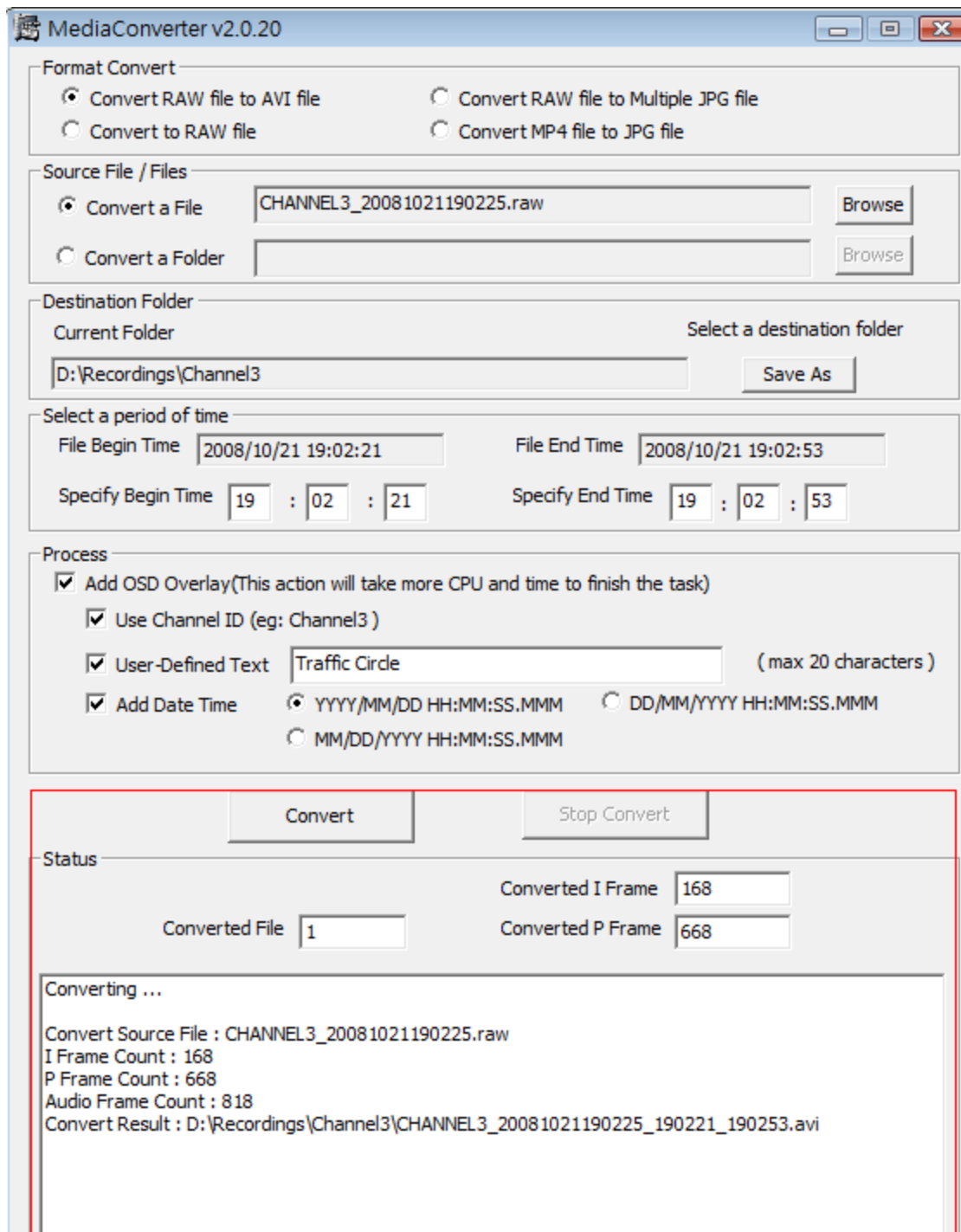


Figure 9 Convert Result